



STT 7030-16

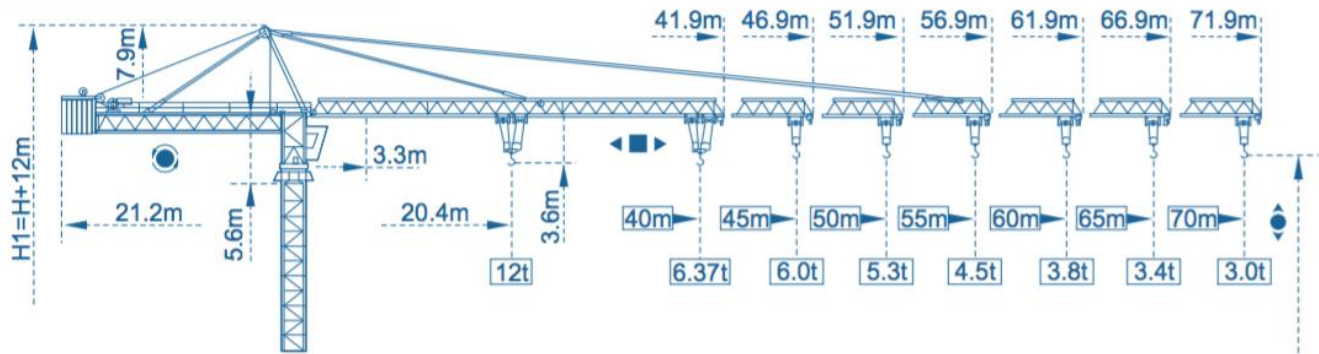
Experts in the field



S&Q MART
SAFETY & QUALITY

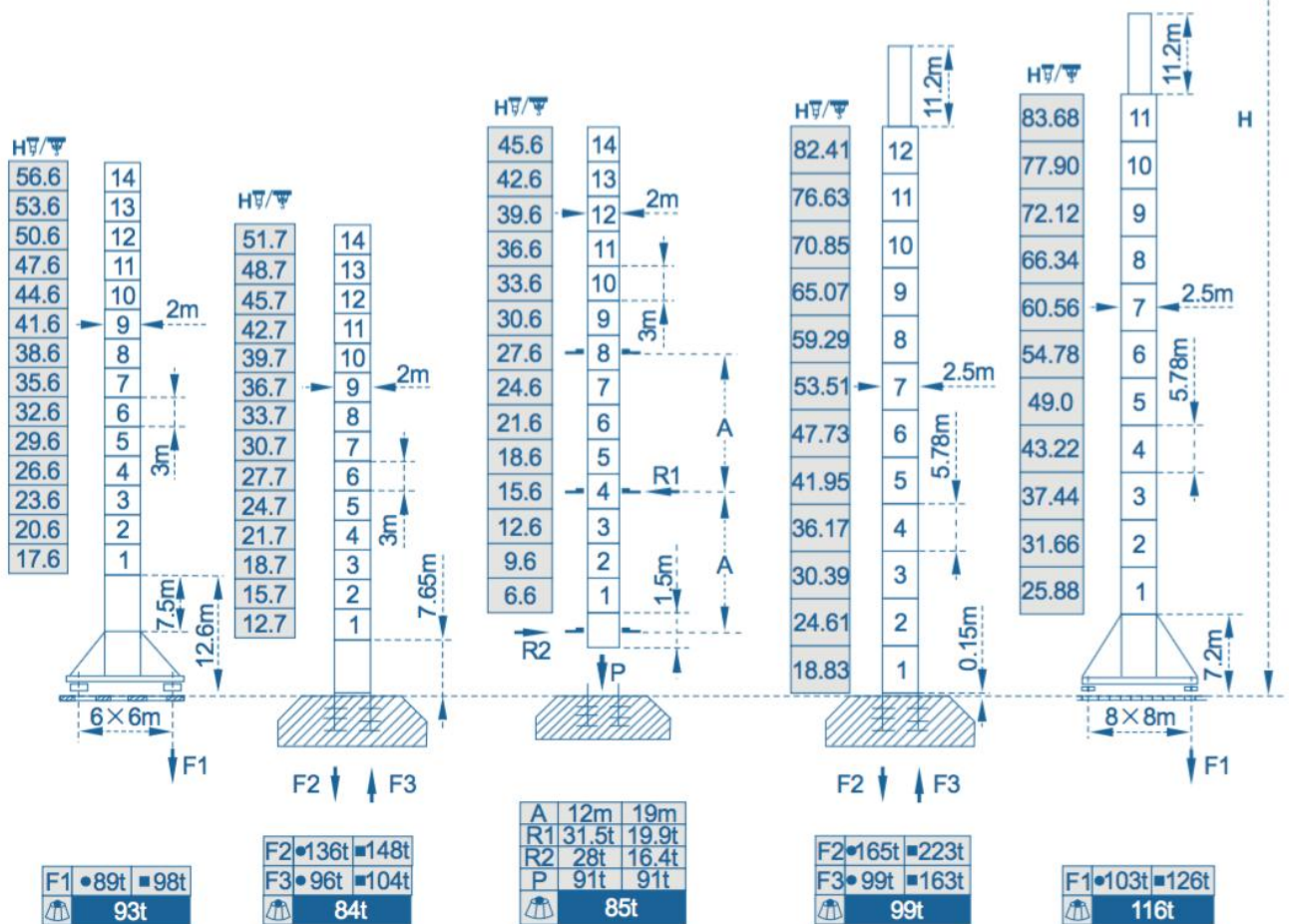


Outline Dimensions



Mast $\varnothing 2m \times 2m$

$\varnothing 2.5m \times 2.5m$

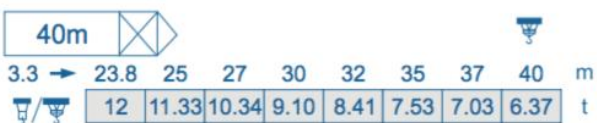
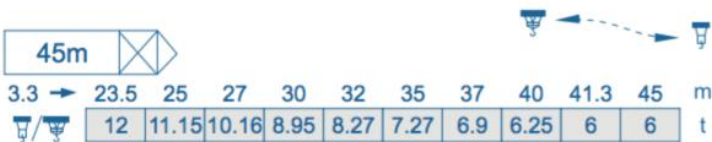
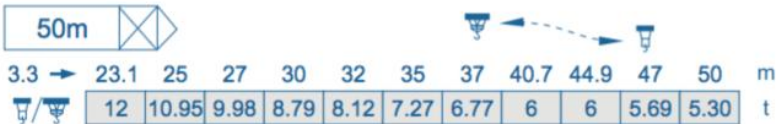
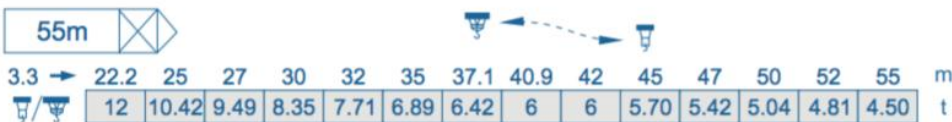
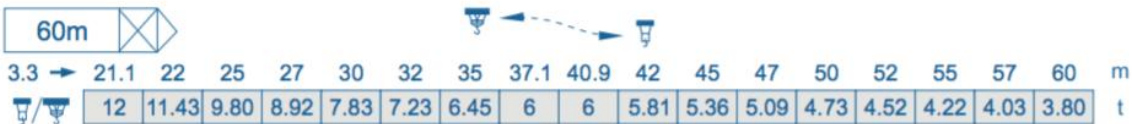
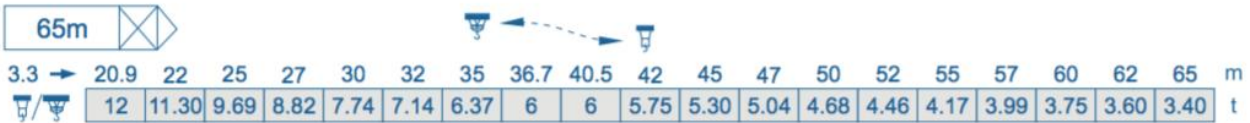
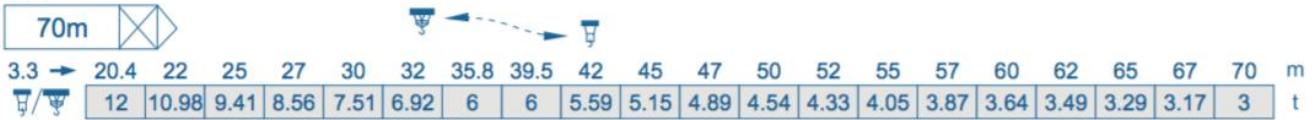




● in service ■ out of service
 Without load and ballast with longest jib and maximum height

F = Reactions

Load diagrams

Jib



Standard trolley 2/4 fall (when using  subtract 0.73t from the loads ).

Specifications Mechanisms						
Mechanisms	Motor type	Speeds m/min		Capacity t.	Rope lenght	Motor kW
Hoisting	75LVF30R ⬆️	2 fall	0-40	6	570m > 570m ★	55
			0-86	3		
		4 fall	0-20	12		
			0-43	6		
	102LVF30F ⬆️	2 fall	0-50	6	1000m >1000m ★	75
			0-100	3		
		4 fall	0-25	12		
			0-50	6		
	120LVF30F ⬆️	2 fall	0-65	6	900m > 900m ★	90
			0-130	3		
			0-260	1.5		
		4 fall	0-32.5	12		
0-65			6			
0-130			3			
70RCS30 ⬆️	2 fall	0-40	6	570m > 570m ★	51.5	
		0-80	3			
	4 fall	0-20	12			
		0-40	6			
Trolleying	XD120K ◀■▶	0-40			120N.m	
	7DCV ◀■▶	0-43			5.5	
	8DVF ◀■▶	0-44			120N.m	
Slewing	RCV185E ⦿	0-0.7 r/min			2×185N.m	
	24RVF ⦿	0-0.7 r/min			2×9	
Travelling	RT443 ◀●▶	0-12.5-25			4×1.7/3.4	
	18TVF ◀●▶	0-25			4×3.4	

★ To be supplied according to client's specific requirements

This commercial documents is not legally bindig.
For any technical information, please refer to
the corresponding instructions.

